

EtherneTV Scheduler

Enterprise-Class Rich Media Delivery Solutions

Enterprise-Class Rich Media Delivery Solutions

VBrick delivers Enterprise-class rich media delivery solutions that scale with your needs. The EtherneTV Scheduler is a software module designed as an integrated component of the EtherneTV Portal Server, and provides the ability to schedule recordings from and to any VBrick component in your Enterprise video system. Whether it's to assure all IPR's tune into a scheduled or priority broadcast, or to automate an entire semester of classroom recordings, the EtherneTV Scheduler provides you with all the tools you need. Using an intuitive calendar-based user interface, live broadcasts, stored events, and even two way conferences can be managed via a predetermined schedule, assuring that your ability to manage your Enterprise rich media delivery solution scales with the size of your system.

Capabilities:

The ETV Scheduler provides the capability necessary to automate the recording or viewing of live or stored events such as classroom recordings, priority announcements, or two-way conference sessions. With additional scripting capabilities, schedules can be customized to integrate with a variety of devices.

Multi-Video Formats include H.264, Windows Media®, MPEG-1,2, and 4 formats, 4:3 and 16:9 aspect ratios, PAL and NTSC formats

Schedule Live Broadcasts by tuning in any VBrick IP Receiver or Decoding Appliance, assuring that events are presented where and when you want them

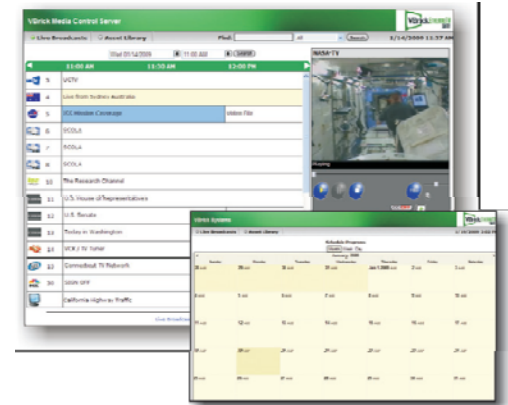
Schedule Stored Broadcasts from the Video on-Demand servers and optionally tune in VBrick IP Receivers or decoding appliances to that stream

Schedule Recordings on the Portal, NVR, or VBrick appliances with hard drives. The resulting file can be published into the EtherneTV system

Schedule Conferences using the encoder/decoder appliances for two-way video sessions, eliminating the need to pre-configure the appliances

Priority Alerts can be scheduled through the EtherneTV Scheduler interface. When a Priority Alert is scheduled or initiated, any VBrick IP Receiver and (with appropriate custom software) any user on your network will receive the Priority Alert message

Product Datasheet



Benefits:

- Intuitive calendar-based interface that is **integrated** with other ETV Portal Server functions
- Ability to **schedule live** and stored video assets
- Priority Alert messaging to **maximize the viewing** of critical information
- Administrative controls that enable **ease of setup** and configuration and controlled access

Product Datasheet

Models:

- 7500-0139
EtherneTV Scheduler Software
- 7510-0139
EtherneTV Scheduler Upgrade

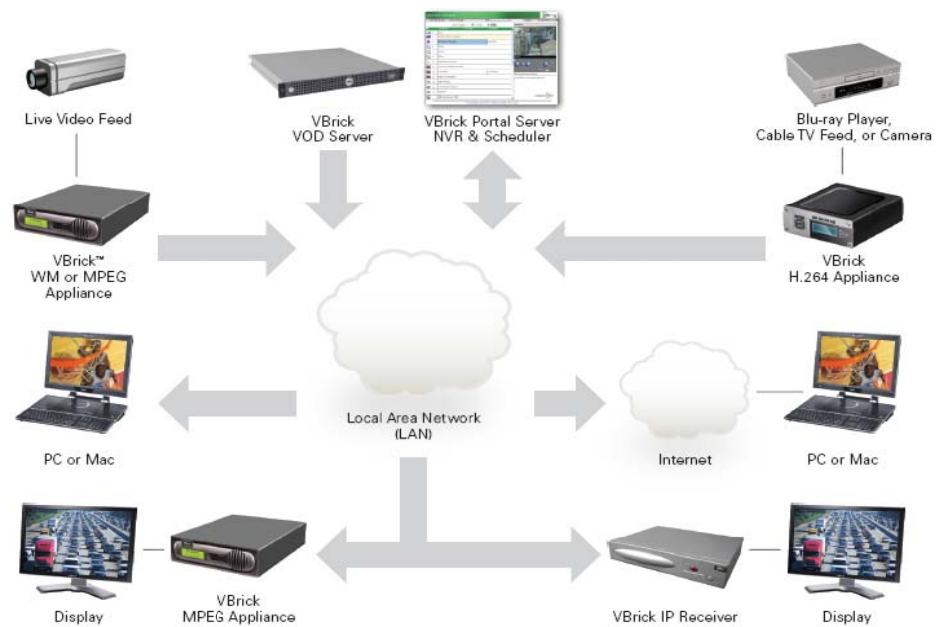
Compatibility:

- LDAP/Active Directory Directory Services
- Windows-based PCs
- Macintosh computers

Interoperability:

- EtherneTV Suite – Portal Server and Network Video Recorder
- EtherneTV IPR – low cost EtherneTV user interface and video decoding (MPEG)
- EtherneTV WM-IPR – low cost video EtherneTV user interface and Windows Media video decoding
- VBrick VOD-W and VOD-WM Video On-Demand Servers
- VBrick Appliances
- VBPriority Alert custom client software

EtherneTV System



FEATURES AND SPECIFICATIONS

PC End User Requirements	<ul style="list-style-type: none"> • Windows 2000, XP (Service Pack 2 or higher), or Vista • Microsoft Internet Explorer 6.0 or higher; or Firefox 3.0 or higher • Windows Media Player 9.0 or higher
Macintosh End User Requirements	<ul style="list-style-type: none"> • Mac OS X 10.4 or higher (Intel Macs only) • Firefox for Macintosh 3.0 or higher; or Safari 3.0 or higher • StreamPlayer for Mac; or QuickTime player 7.0 or higher (H.264 and MPEG-4 only)
System Requirements	<ul style="list-style-type: none"> • Windows Server 2003 (Web Edition or Standard Edition with Service Pack 2) • Pentium IV or Xeon Processor 1.26 GHz Minimum (2 GHz or higher recommended) • RAM 512 MB Minimum (2 GB or more recommended) • Hard Drive 36 GB Minimum (larger for frequent recording)

LTI DataComm

23020 Eaglewood Ct. #100
Sterling, VA 20166
www.ltidata.com
800-677-5050