

Shunra Virtual Enterprise

Network Simulation Appliance

Recreate Any Production Network In Minutes

Shunra VE delivers a highly robust, comprehensive network simulation solution, that creates a virtual network environment in your pre deployment lab. It delivers a powerful, flexible, and easy way to test the performance of your applications and network equipment under a wide variety of network impairments exactly as if they were running in a real production environment throughout the development lifecycle. Using Shunra VE, you will understand the impact that the network and applications have on each other's performance and on remote end-users' experiences, and uncover and resolve production related problems before rollout.

In addition to the empirical experience, Shunra VE provides a wide range of graphically rich reports and drill down analysis capabilities. These help you isolate and resolve the root causes of network and application problems early, and determine whether any modifications to the application, network or infrastructure are needed. Shunra VE gives you the information you need to make informed decisions and ensure service levels to remote end-users.

Award Winning Network Simulation Solutions From The Industry Leader

Shunra is the pioneer and leading provider of network simulation solutions. Since 1997, Shunra's award winning software and hardware solutions have enabled over 1,700 leading organizations worldwide to ensure that their mission critical applications are optimized for remote end-users.

Shunra VE combines a high performance hardware appliance with easy-to-use innovative software. This creates a powerful network simulation solution that includes detailed reports and root cause analysis. Shunra VE is extremely easy to install, configure and use, and it seamlessly integrates with your existing infrastructure and lab environment, right out-of-the-box.

Shunra VE Is Ideal For:

Infrastructure Projects

- Data center or server consolidation
- Disaster recovery
- Network capacity planning
- Network design
- VOIP planning and testing
- Infrastructure change management
- IPv6 migration
- Active directory deployments and email migrations
- Storage area network deployment

Testing Projects

- Pre deployment testing for enterprise applications such as Oracle, SAP, and Microsoft
- Vendor equipment evaluations
- User acceptance testing
- Post deployment troubleshooting
- Wireless/cellular and satellite network testing
- eCommerce and Internet testing
- Application offshoring
- Change control management

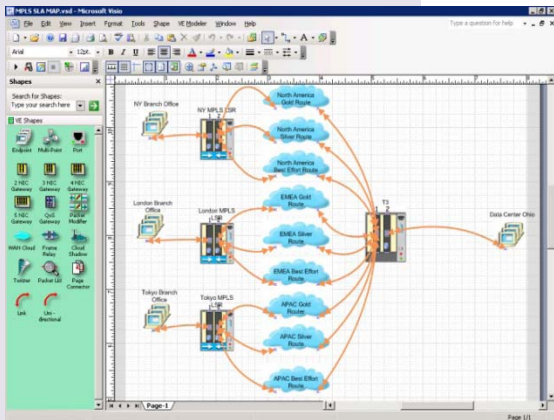
Product Overview



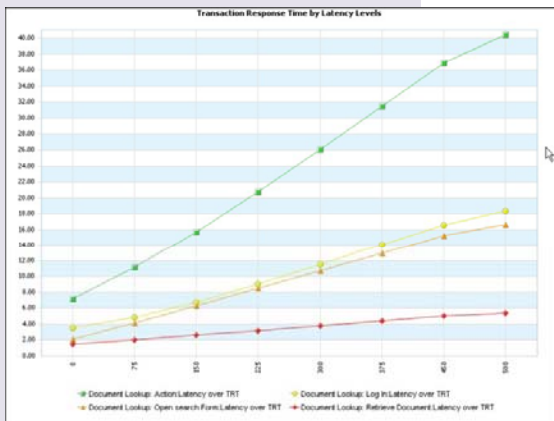
Benefits:

- **Know** exactly how new or updated applications or network services will perform for remote end-users throughout the development lifecycle
- **Ensure an optimal remote end-user experience**
- **Eliminate phased rollouts** to remote end-users, and avoid a fix-as-you-go approach
- **Execute sound infrastructure investment** decisions without complex field trials
- **Troubleshoot post production** problems and verify resolution, quickly and easily
- **Avoid** production related network or application problems

Product Overview

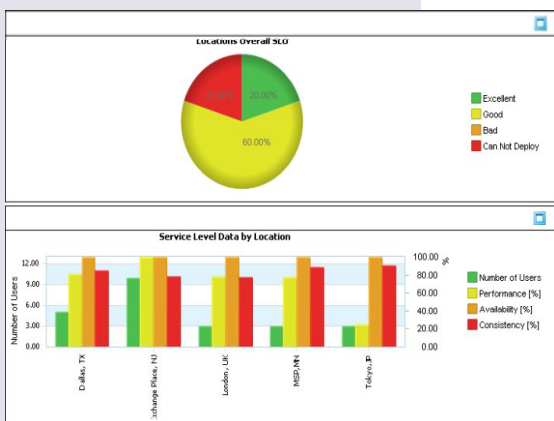


- Simulates a **wide range of network impairments** including latency, jitter, bandwidth, congestion, packet loss, BER, fragmentation, duplication, disconnection, reordering, data corruption and modification, and much more.
- **Simulates any network topology** including client/server, multiple branch offices with distributed data centers, full mesh networks, complex N-Tier network topologies, internet, eCommerce and much more.
- **Simulates a wide range of network technologies** including MPLS, Ethernet, QoS, frame relay, wireless and cellular networks, satellite networks, IPv4 and IPv6.
- **Easy to install, configure and use** by network experts, application professionals and developers alike.
- **Ideal for use throughout the development lifecycle**, from design through production.
- Combines a powerful **high performance network simulation** appliance with a **Microsoft Visio-based console** that makes network modeling quick, easy, and straightforward.
- Captures and replays **real-life production network conditions** to create a mirror image of the production network.
- **Seamlessly integrates with automated load tools** from Mercury and Borland, with layer 1-7 traffic generators, and VoIP call generators, etc.
- Provides **extensive reporting capabilities** as well as deep, drill down transaction performance metrics for root cause analysis.



Answers Key Network Questions

- What infrastructure is necessary to ensure application service levels?
- What are each application's "breaking points"?
- Which vendor or version performs best over the network?
- Will your application meet service level objectives at each remote location?
- Is your application and its' supporting infrastructure ready to go live?
- What will be the impact of adding more application users in a branch office?



LTI DataComm
 23020 Eaglewood Ct. #100
 Sterling, VA 20166
 www.ltidata.com
 800-677-5050