

# The Accelerator Family

## Network Performance Optimization Platform

### Wide Area Network (WAN ) Optimization

Next-generation compression and caching algorithms optimize WAN connections to provide 100-400% more capacity on average with peaks of 1000+% while layer 7 QoS stops bandwidth abuse and enables prioritization of critical applications. The result is the ability to support more users, applications and networked services without upgrading the WAN infrastructure or increasing recurring capital costs.

### Application/Protocol Acceleration

Even with the largest WAN links, the effects of latency will still be felt by remote users. The need to take latency out of the equation to improve application response times is a key focus of the application acceleration technologies which target many applications and protocols including: HTTP, DNS, FTP, TCP, CIFS, MAPI and Citrix.

### Security

Speeding up applications across the distributed network mandates reliable and secure transfer of mission critical data to protect corporate information assets. The Accelerator's AAA and IPsec features give legitimate users the ability to access networked assets while supporting the secure exchange of packets over the WAN.

### Management and Visibility

The Accelerator's robust monitoring capability automatically discovers, classifies and reports on hundreds of enterprise applications while detecting WAN performance problems from a centralized management platform. This allows administrators to regain control and visibility over application and network performance that impact the remote users they serve.

### Wide Area File Services (WAFS)

The Accelerator's WAFS offering enables the consolidation of distributed file servers while maintaining LAN-like application response times for remote users. Unique to this WAFS solution is the "Virtual-Server" capability which handles remote print services and network-based services like DNS (Domain Name System) and DHCP (Dynamic Host Configuration Protocol) - functionality that typically would require three or four discrete boxes at a remote office. Additionally the "WAN-Out" mode allows users to continue working in the event of a network outage. The Accelerator's WAFS technology eliminates the need for a footprint in every remote operation and also reduces the cost associated with setting up new remote locations.

## Products Overview



## Features

- **Improves Network Performance by 100-400+% with peaks of 1000%**
- **TCP Acceleration Reduces the Effects of Latency**
- **Advanced Security Features, including AAA**
- **Rapid Deployment, Instant Results**
- **Robust Remote Monitoring & Management**

# Services Overview



## Accelerator Product Line

The Accelerator is an open platform of tightly integrated technologies proven in the simplest to most complex customer networks. Acceleration helps organizations simplify their IT infrastructure while delivering superior application performance to distributed environments.

### 4800 Series

The Accelerator 4800 Series supports line speeds from 256 Kbps up to 6 Mbps, and is typically installed as a central site solution. Rack-and-stack functionality allows this series to scale beyond 6 Mbps. Greater speeds are supported with load sharing and rack-and-stack options for fractional DS3/E3, DS3/E3, and TLS for larger central sites.

### 4900 Series

The Accelerator 4900 Series is a remote branch device supporting WAN speeds of up to 2Mbps and 10 remote sites. This new Accelerator hardware platform provides higher performance with an on-board Hard Drive.

### 6800 Series

The Accelerator 6800 Series supports high-speed WAN links and can be deployed to support hundreds of remote sites. It scales from 2 Mbps to 45 Mbps and supports Gigabit Ethernet and rack-and-stack deployments. The accelerator 6800 Series delivers robust performance and offers extensive built-in Layer 7 QoS to prioritize traffic based on business objectives.

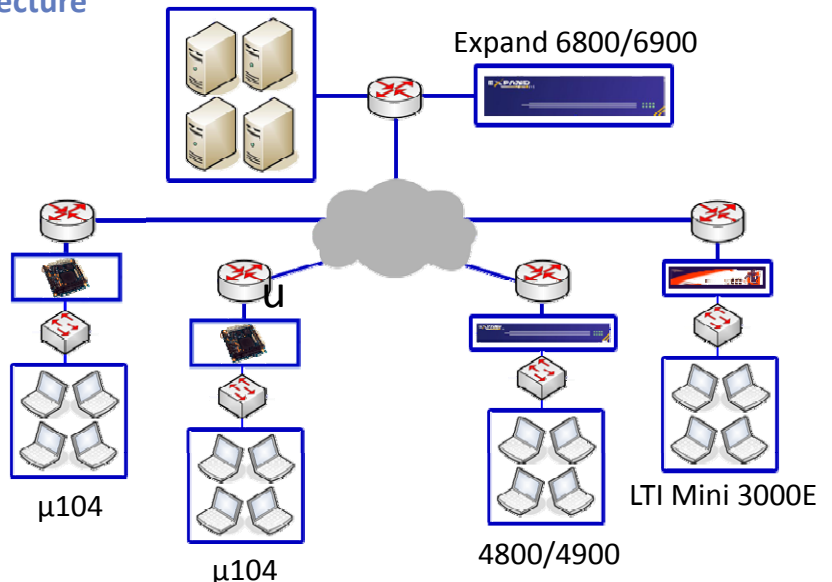
### 6900 Series

The Accelerator 6900 Series is geared for large datacenters, and can support WAN speeds of up to 10Mbps and 200 remote sites. This Accelerator hardware platform provides higher performance with an on-board Hard Drive.

### 7900 Series

The Accelerator 7900 Series are designed for the datacenter and offer the scale and flexibility needed to survive in some of the largest and most complex environments, and can support WAN speeds of up to 45 Mbps and 350 remote sites. With productivity, cost reduction, and simplicity in mind this series delivers Expand's most scalable and highest performing appliance ever.

## Architecture



**LTI DataComm**  
23020 Eaglewood Ct. #100  
Sterling, VA 20166  
www.ltidata.com  
800-677-5050