

Accelerator μ 104

Board Level WAN Optimization

Optimal Form Factor and Functionality for Systems Integrators

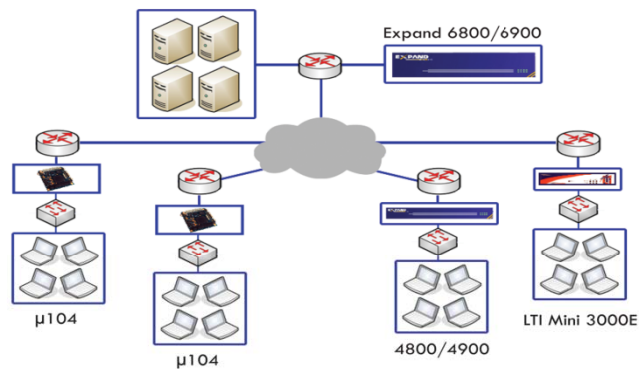
The Accelerator μ 104 offers the full capability of Expand Network's WAN Optimization technology in a board-level kit. The μ 104 allows for easy inclusion in integrated communications systems, making it the perfect optimization solution for Systems Integrators, tactical military customers, and within aviation platforms. The Accelerator μ 104's capabilities and price point have also been carefully calculated to allow for the greatest performance and ROI.

The μ 104 employs a fundamentally different hardware platform upon which to run the standard Accelerator OS 6+ software with minimal modifications. An ideal solution for our integrator customers, the hardware consists of a single board encompassing all necessary components. Small in stature, but big on performance, the μ 104 employs innovative silicon technologies such as the AMD Geode LX system processor, which enables higher performance at a fraction of the size, power consumption, and thermal dissipation of previous models.

Cost Effective, Scalable Licensing

To fully complement the effectiveness of this unique product for a variety of end users, a licensing model has been developed that allows for easy scalability. Customers can purchase additional product features as their usage requirements and revenues increase. Licensing has been divided between the major elements of the Expand software capabilities, such as acceleration, TCP acceleration, and QoS, while maintaining the potential for future additions such as Expand View.

Architecture



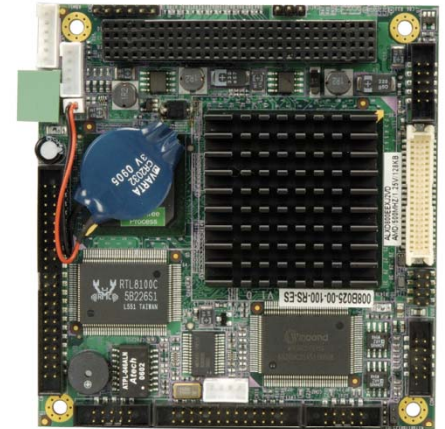
Hardware Specifications

CPU	AMD LX800 500Mhz Processor	Display	VGA integrated in LX800, 24-bit TTL
System Memory	1 x DDR 200 Pin DDR333/400 SO-DIMM support up to 512MB	Power Supply	5V Only, AT support
Ethernet	10/100 Mbps Ethernet chipset	Power Consumption	5V@1.13A
I/O Interface	2 x RS232, 2 x USB	Temperature	0 ~ 60° (32 ~ 140°F)
Expansion	1 x PCI-104	Humidity	5% ~ 95% non-condensing
Dimension	95mm(L) x 95mm(W)	Mean Time Between Failures	381,664 Hours
Weight	NW110g, GW:500g		

Software Specifications

Accelerated Throughput	Up to 2 Mbps Aggregate	Monitoring	SNMP v2, v3 - Netflow v7, ExpandView
TCP Connections	Up to 2500	Authentication	Radius, AAA, TACAS
Non-Blocking Throughput	Up to 100 Mbps		

Product Overview



Features:

- **Proven Performance Improvement by 100%-400%+ with Peaks up to 1,000%**
- **Board-Level Form Factor for Easy Integration**
- **Scalable Licensing for Maximum Flexibility of use with any WAN Optimization Feature**
- **Up to 2Mbps Aggregate Throughput**
- **Rapid Deployment; Instant Results**
- **Compatible with all Expand Networks and LTI DataComm Accelerator Devices**
- **Fanless Operation**

LTI DataComm
23020 Eaglewood Ct. #100
Sterling, VA 20166
www.ltidata.com
800-677-5050

Copyright 2009, LTI DataComm. All rights reserved. Specifications are subject to change. All registered trademarks are the property of the manufacturer. Powered by Expand Networks.

Solutions to Serve, Solutions for Service